

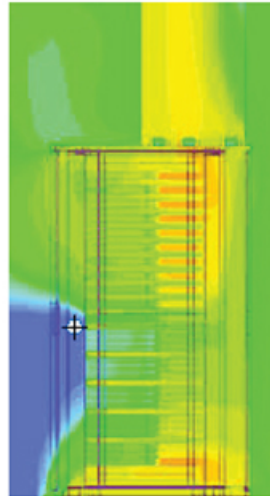
# PACKET POWER



Packet Power offers the industry's easiest to install and most affordable wireless environmental monitoring. Track temperature, relative humidity and differential pressure where needed. And go from installation to information in minutes...even seconds.

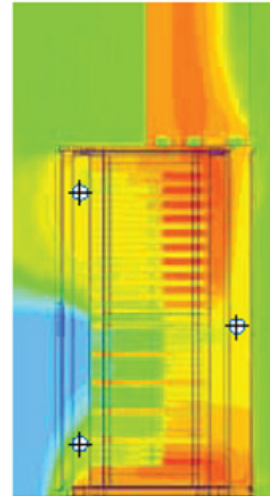
## Wireless Environmental Monitoring

⊕ Probe location



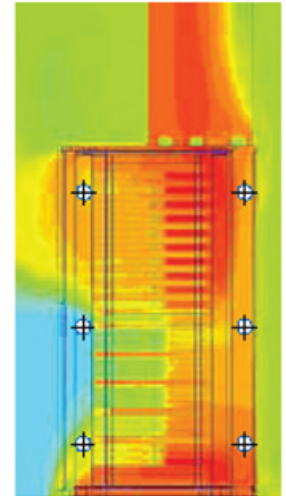
**Low Density Cabinet**

1 probe per cabinet



**Standard Cabinet**

3 probes per cabinet



**High Density Cabinet**

6 probes per cabinet (2 monitors)

### Gain real-time insight that can be used to:

- Identify hot spots, optimize airflow and focus cooling on areas where it's most needed
- Safely raise ambient temperature to reduce energy costs while avoiding damage to equipment from overheating
- Manage humidity
- Ensure compliance with industry guidelines and SLAs
- Be alerted to changes that may indicate potential performance problems

### Installs quickly

Battery or AC power? One reading per row or 12 readings per rack? No problem. Our range of environmental monitors combines industry-leading flexibility with exceptionally low costs. From the pure wire-free simplicity of the "stick and go" E300 to the tremendous flexibility of covering twelve points across as much as 30 meters with an E312, Packet Power's ability to match the amount of metering to your needs and eliminate all data communications wiring makes it easy to measure what matters to you.