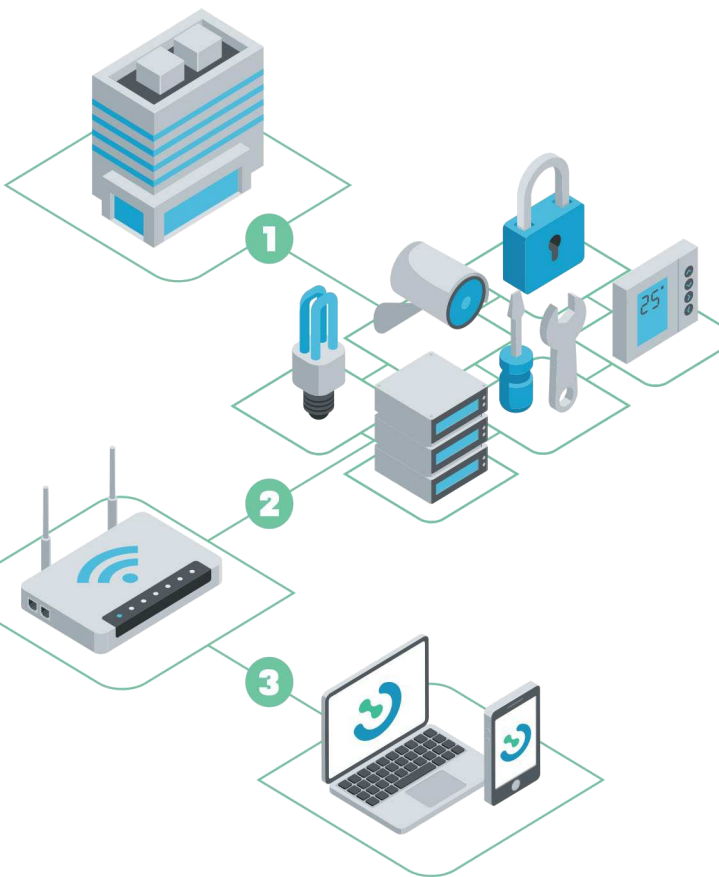


How EntroCIM Works



- 1** The EntroCIM platform is securely installed within a facility's on-site server or cloud server.
- 2** The facility's devices are connected to EntroCIM through a local network.
- 3** EntroCIM allows access and control of facility devices from computers, tablets and smartphones, making it easy to monitor and manage complex building systems.

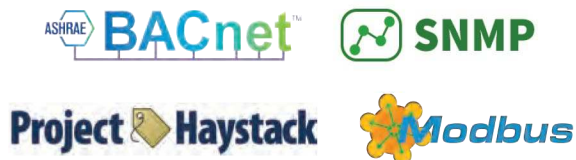


Contact Us

Schedule a live demo.

(586) 783-3400 | support@JEMtechgroup.com

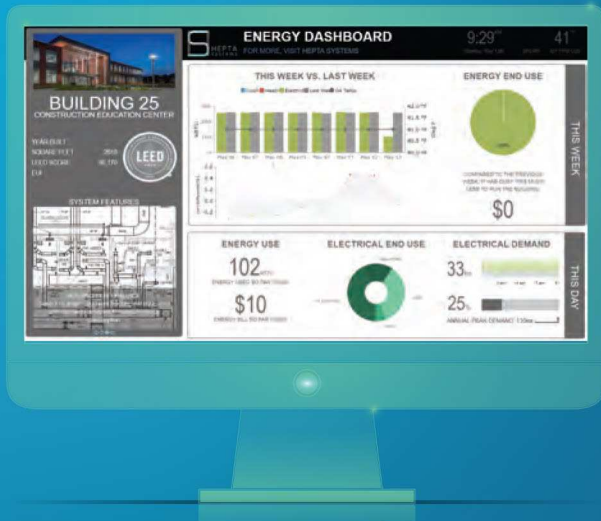
JEMtechgroup.com



Facility Integration, Management & Automation Platform



About EntroCIM



EntroCIM allows you to manage and automate your facility, campus or portfolio in a Single Pane of Glass.

We bring all of your building's IoT devices and hardware, including 3rd party services, into one, easy-to-use software application that can be accessed from anywhere at any time and is made for any size facility, single or multiple buildings, industry or complexity.

With EntroCIM, your team can manage, monitor and control your facility by instantly accessing real-time energy usage, scheduling maintenance, sharing reports with user groups, controlling lights and thermostats and much more.

Key Benefits

- ✓ Lower facility management, training and staffing costs
- ✓ Manage and control energy use to reduce costs
- ✓ Increase security, cyber security and safety
- ✓ Autogenerate reports to identify issues before they become a costly problem
- ✓ Access important facility documents from a single location
- ✓ Schedule and track facility maintenance
- ✓ Scalable and easily expandable system

Features

- 📱 Cross-Device HTML 5 Interface
- 🔗 All-Building IoT Devices
- 🖥️ Single Display Application
- 📊 Facility Resource Analytics & Controls
- 🏢 Multi-Facility Management Capable

Controls

- ⚡ Energy
- 🏢 Facility
- 🔒 Cyber Security
- 📶 Network
- 🔧 Maintenance

Components

- 🎨 Custom Dashboard
- 📊 AI Reporting
- 🔗 Analytics with Machine Learning
- 📊 Data Center & Analytics
- 📊 Data Center Management
- 🖼️ Custom Graphics
- 🕒 Historian
- 👤 Logic Builder
- 🔔 Alarms

API Connection

- 🔗 Constant Expansion
- ⚙️ New IoT Device Additions
- ★ New Feature Updates

Device Connections

- 🔄 BAS
- 📈 Metering
- 💡 Lighting
- 📹 IoT Sensors
- ⬆️ Elevators
- 🔥 Fire Alarms
- 📠 Legacy Devices



Learn More

(586) 783-3400

support@JEMtechgroup.com